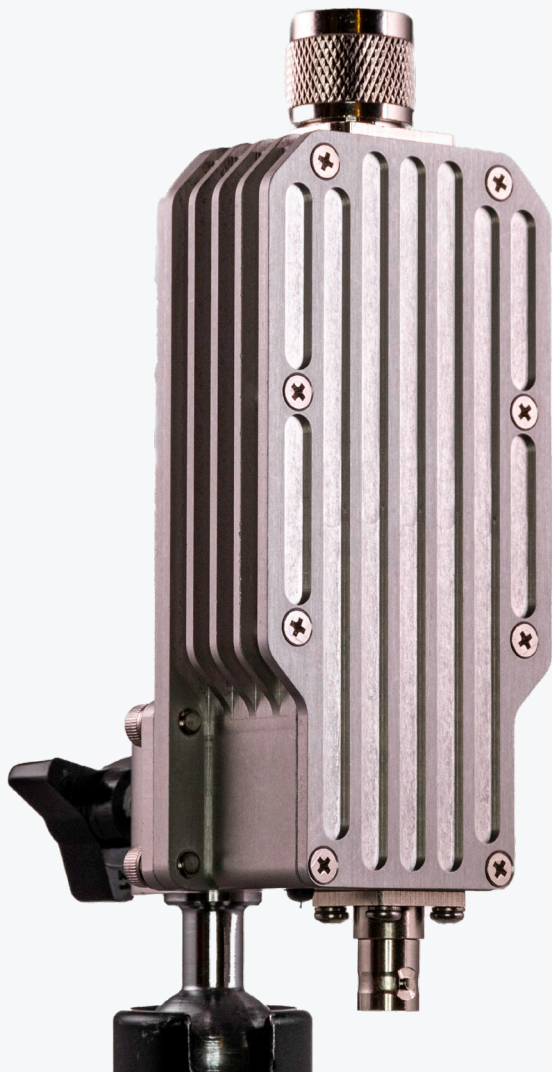




AXIS BDC



RF

RF FREQUENCY Ranges up to 7.1GHz

IF FREQUENCY RANGE 150 - 850 MHz

(LO) FREQUENCY Low-side Local Oscillator

SETTINGS 10dB gain (low setting), 30dB gain (high setting)

CONNECTORS

RF INPUTS Type N male
BNC female IF output / DC input

POWER

POWER INPUT 9 - 15VDC

POWER CONSUMPTION 3 - 5W

DIMENSIONS

SIZE (WxDxH) 6x2.187x1.125

UNIT WEIGHT .75lb / 340g

MOUNTING 5/8" mounting stud hole with thumb screw

CONTROLLER SIZE (WxDxH) 19x1.75x7.25 in